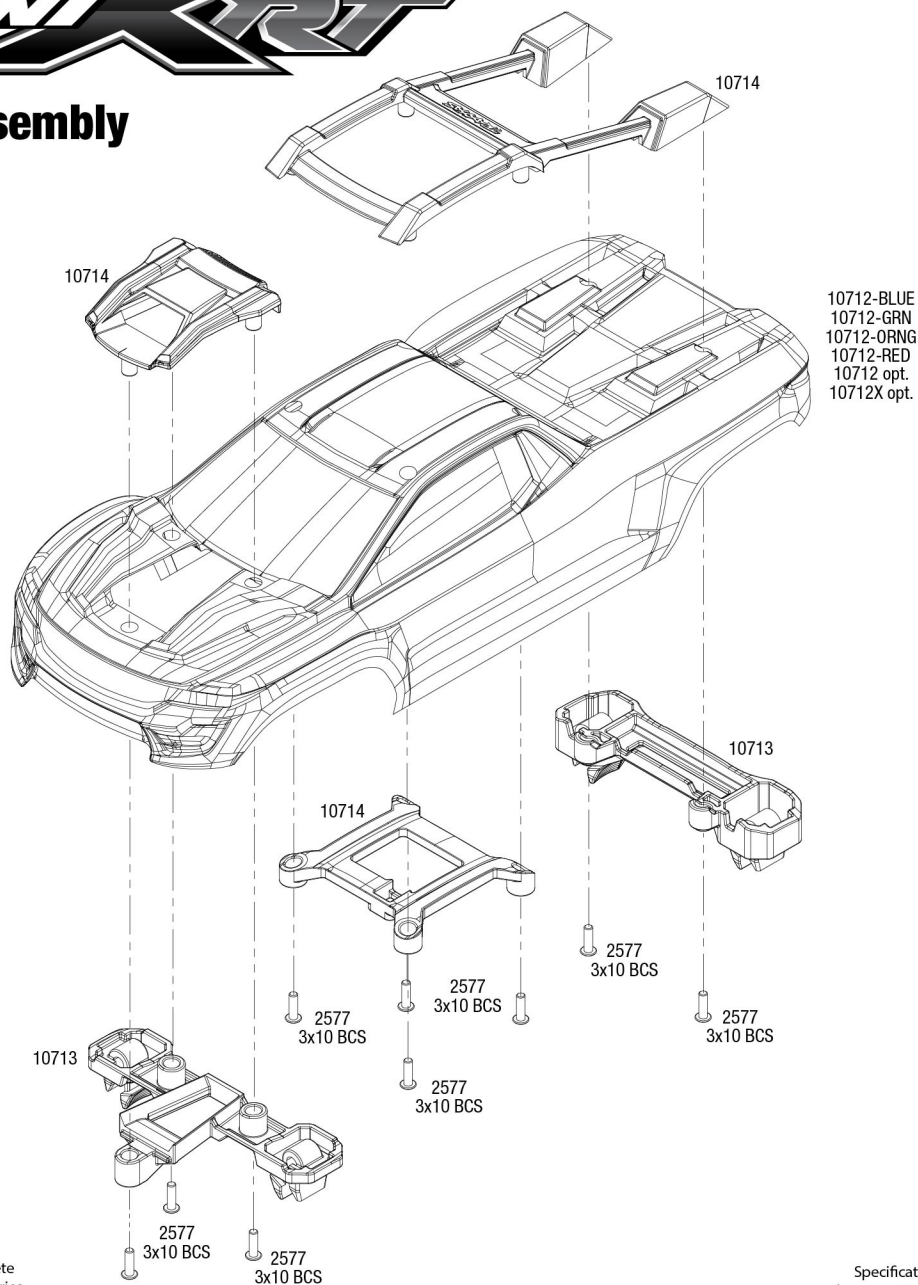
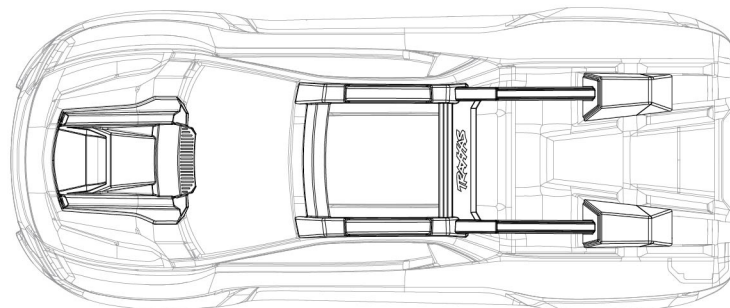




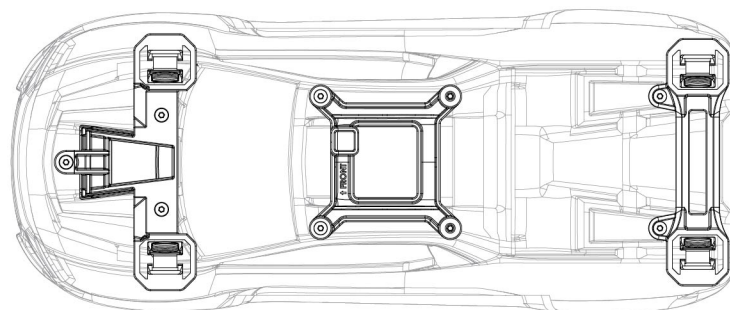
Body Assembly



Completed Assembly (view from top)

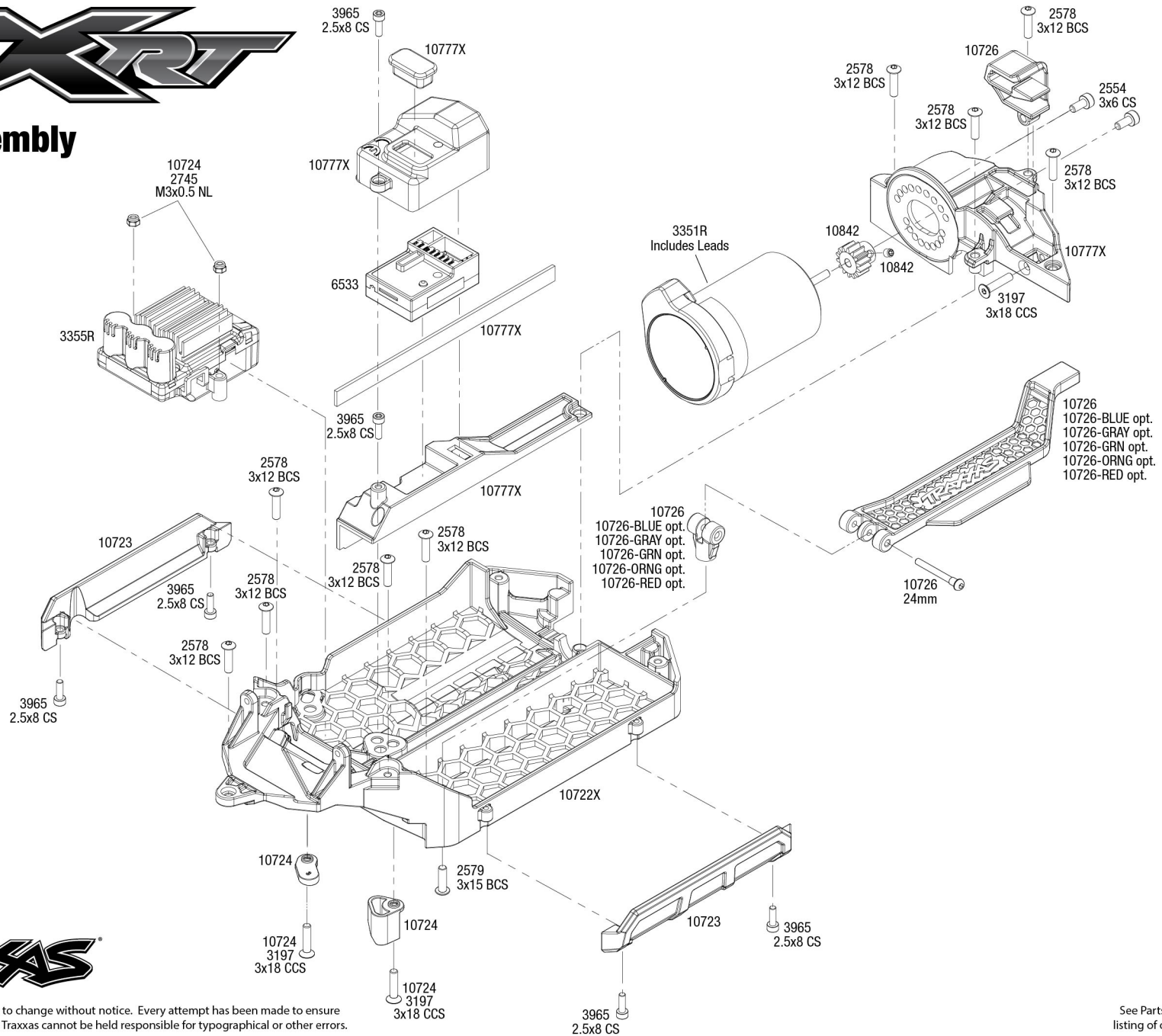


Completed Assembly (view from bottom)



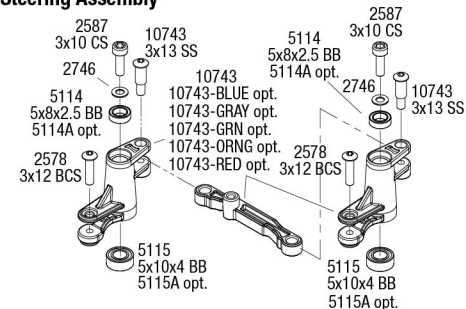


Chassis Assembly

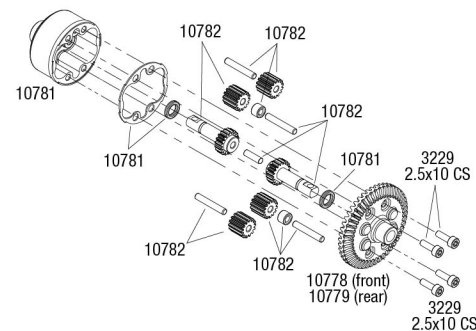


Specifications on this page are subject to change without notice. Every attempt has been made to ensure the accuracy of this drawing; however, Traxxas cannot be held responsible for typographical or other errors.

REV 250226-R00
See Parts List for a complete listing of optional accessories.



Front & Rear Differential Assembly

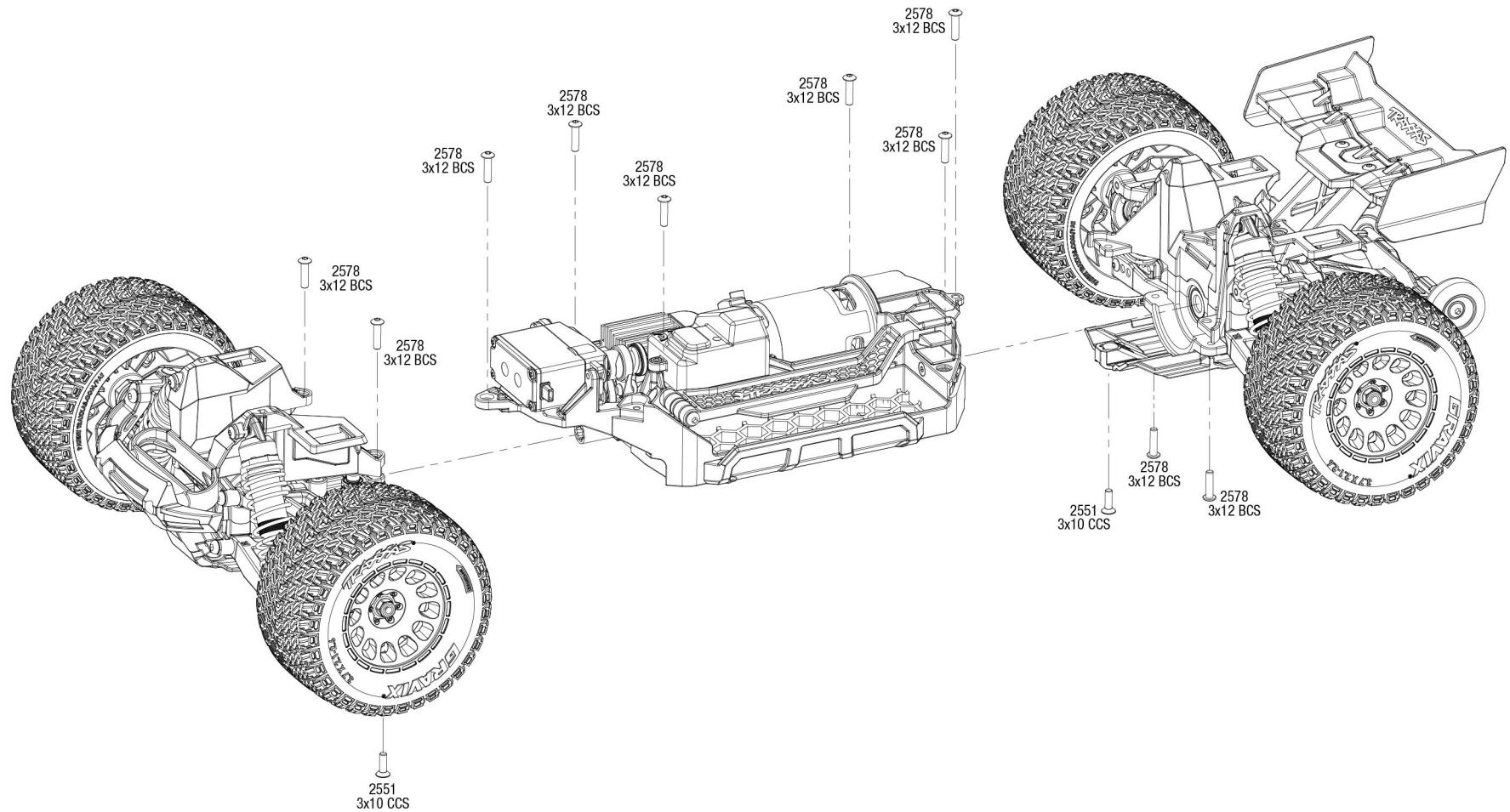


10772-GRAY
10773-WHT opt.
10774-GRAY opt.

See Parts List for a complete listing of optional accessories.

Specifications on this page are subject to change without notice. Every attempt has been made to ensure the accuracy of this drawing; however, Traxxas cannot be held responsible for typographical or other errors.

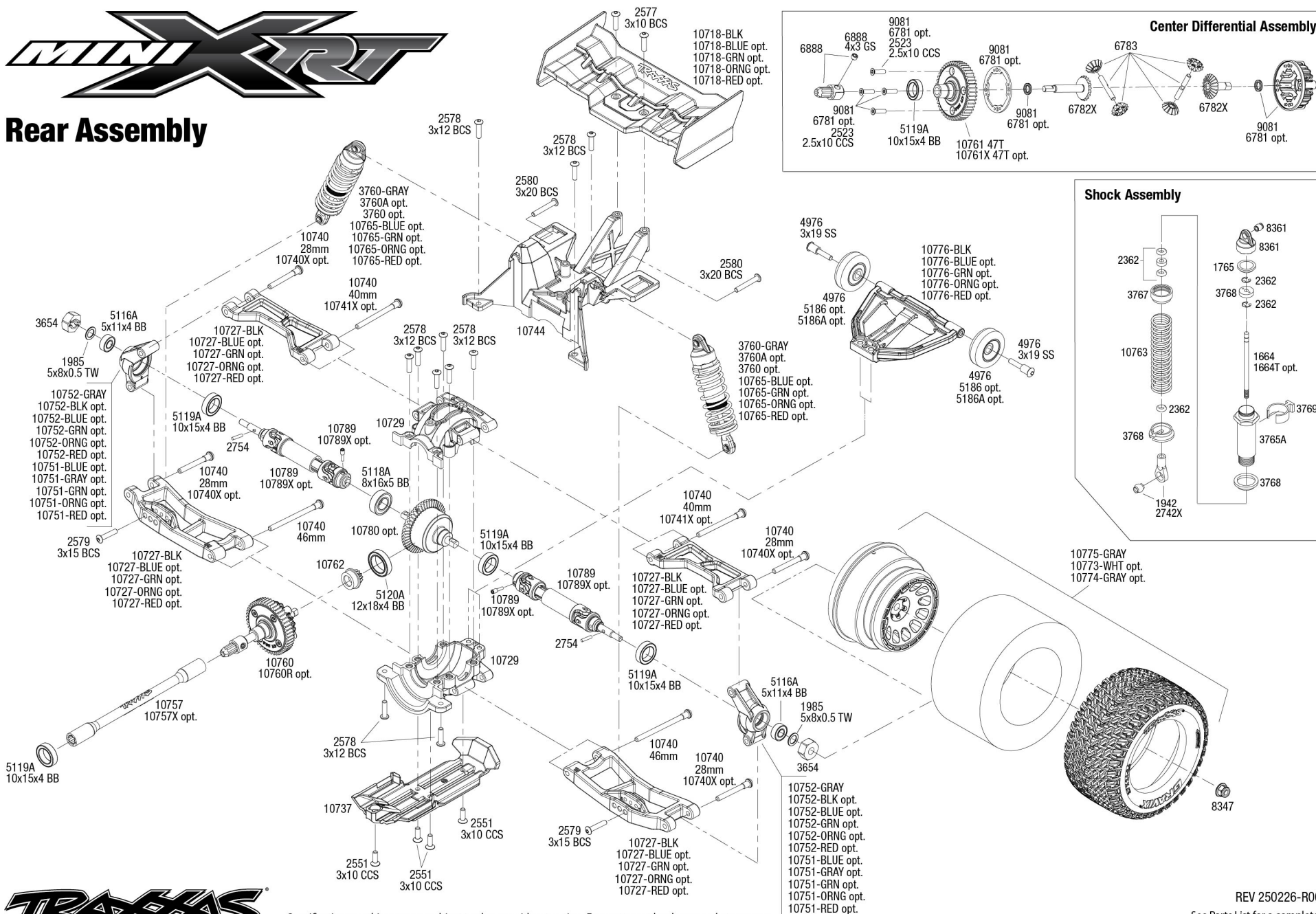




REV 250226-R00
See Parts List for a complete
listing of optional accessories.



Rear Assembly



Specifications on this page are subject to change without notice. Every attempt has been made to ensure the accuracy of this drawing; however, Traxxas cannot be held responsible for typographical or other errors.

REV 250226-R00

See Parts List for a complete listing of optional accessories.



Mini XRT® (Model 108076-1) Parts List

Parts shown in bold are optional accessories. Part categories and individual part listings are arranged alphabetically.

Bearings & Bushings

5119A	Ball bearings, black rubber sealed (10x15x4mm) (2)
5120A	Ball bearings, black rubber sealed (12x18x4mm) (2)
5115A	Ball bearings, black rubber sealed (5x10x4mm) (2)
5116A	Ball bearings, black rubber sealed (5x11x4mm) (2)
5114A	Ball bearings, black rubber sealed (5x8x2.5mm) (2)
10719	Ball bearings, black rubber sealed (7x14x3.5mm) (2)
5103A	Ball bearings, black rubber sealed (7x14x5mm) (2)
5118A	Ball bearings, black rubber sealed (8x16x5mm) (2)
5115	Ball bearings, blue rubber shield (5x10x4mm) (2)
5114	Ball bearings, blue rubber shield (5x8x2.5mm) (2)

Body & Accessories

10714	Body reinforcement set (fits #10712 body)
10712	Body, Mini XRT® (clear, requires painting)/ window masks/ decal sheet (includes front & rear body latches, hardware) (for clipless mounting)
10712-BLUE	Body, Mini XRT®, blue (painted, decals applied)
10712-GRN	Body, Mini XRT®, green (painted, decals applied)
10712-ORNG	Body, Mini XRT®, orange (painted, decals applied)
10712X	Body, Mini XRT®, ProGraphix® (graphics are printed, requires paint & final color application)/ decals (includes front & rear body latches, hardware) (for clipless mounting)
10712-RED	Body, Mini XRT®, red (painted, decals applied)
10713	Latch, body mount, front & rear (for clipless body mounting) (attaches to #10712 body)

Bumpers & Skidplates

10749-BLK	Bumper, front (black)
10737	Skid plate, front (1), rear (1)

Chassis & Attachments

10724	Adapters, electronic speed control (inner (3), outer (3))
10726-BLUE	Battery hold-down, hold-down post (blue-anodized 6061-T6 aluminum)/ 3x15mm BCS (with threadlock) (1)
10726-GRAY	Battery hold-down, hold-down post (dark titanium-anodized 6061-T6 aluminum)/ 3x15mm BCS (with threadlock) (1)
10726-GRN	Battery hold-down, hold-down post (green-anodized 6061-T6 aluminum)/ 3x15mm BCS (with threadlock) (1)
10726-ORNG	Battery hold-down, hold-down post (orange-anodized 6061-T6 aluminum)/ 3x15mm BCS (with threadlock) (1)
10726-RED	Battery hold-down, hold-down post (red-anodized 6061-T6 aluminum)/ 3x15mm BCS (with threadlock) (1)
10726	Battery hold-down/ battery clip/ hold-down post
10728X	Bulkhead, front (upper & lower)
10729	Bulkhead, rear (upper & lower)
10722X	Chassis (requires #10728X front bulkhead)
10777	Covers, gear (1)/ receiver (1)/ center driveshaft (1)
10777X	Covers, gear (1)/ receiver (1)/ center driveshaft (1)
10723	Nerf bars, chassis (2)
10746	Shock tower, front
10744	Shock tower, rear
10776-BLK	Wheelie bar (assembled)
10776-BLUE	Wheelie bar, blue (assembled)
10776-GRN	Wheelie bar, green (assembled)
10776-ORNG	Wheelie bar, orange (assembled)
10776-RED	Wheelie bar, red (assembled)
4976	Wheels (4)/ Axles (2), for Maxx® Wheelie Bar
5186A	Wheels, aluminum (blue-anodized) (2)/ 5x8mm ball bearings (4)/ axles (2)/ rubber tires (2)
5186	Wheels, aluminum (red-anodized) (2)/ 5x8mm ball bearings (4)/ axles (2)/ rubber tires (2)
10718-BLK	Wing (black)
10718-BLUE	Wing (blue)
10718-GRN	Wing (green)
10718-ORNG	Wing (orange)
10718-RED	Wing (red)

Differential Components

10781	Carrier, differential (planetary gears)/ o-rings (2)/ ring gear gasket
10780	Differential assembly (bevel gear), front or rear, complete/ pinion gear, differential, 12-tooth (front (1), rear (1)) (fits Mini Maxx®)
10760R	Differential kit, center (complete with steel spur gear) (aluminum carrier) (requires #10757 & #10762)
10760	Differential kit, center (complete) (requires #10757 & 10762)
6888	Drive hub, center, rear (1)/ 4x3 GS (1)

10782	Gear set, differential (output gears (2), output gear shaft (1), planetary gears (4), planetary gear shafts (4), differential spacers (2))
6783	Gear set, differential (spider gears (4)/ spider gear shaft (2))
6781	Housing, center differential (aluminum)/ x-ring gaskets (2)/ ring gear gasket (1)/ bushings (4)/ 5x10x0.5 PTW (1)/ 2.5x10 CCS (with threadlock) (4)
9081	Housing, center differential/ x-ring gaskets (2)/ 5x10x0.5 PTFE-coated washer (1)/ 2.5x10 CCS (4)
6782X	Output gears, center differential, hardened steel (2)
10762	Pinion gear, differential (12/47 ratio) (rear) (requires #10757 with either #10758 or 10760)
10778	Ring gear, differential, 47-tooth/ pinion gear, differential, 12-tooth (planetary) (front)
10779	Ring gear, differential, 47-tooth/ pinion gear, differential, 12-tooth (planetary) (rear)
10761	Spur gear, 47-tooth (0.8 metric pitch, compatible with 32-pitch) (for center differential)
10761X	Spur gear, steel, 47-tooth (0.8 metric pitch, compatible with 32-pitch) (for center differential)

Driveline Components

9059X	Cross pin (2)/ drive pin (2) (repairs 1 axle shaft)
10787	Differential output yoke assembly, extreme heavy duty (1) (left or right, front or rear) (assembled with external-splined half shaft)/ screw pin (1) (for use with #10790 Mini Maxx® WideMaxx® suspension kit)
10747X	Drive cup, steel (1)/ screw pin (1)
6888	Drive hub, center, rear (1)/ 4x3 GS (1)
10789	Driveshaft assembly (left or right, front or rear) (1) (fully assembled, ready to install)/ screw pin (1) (for use with #10790 Mini Maxx® WideMaxx® suspension kit)
10757X	Driveshaft, center, aluminum (requires #10762 with either #10758 or 10760)
10757	Driveshaft, center, plastic (requires #10762 with either #10758 or 10760)
10786X	Driveshaft, steel constant-velocity (shaft only, 63.5mm) (1) (for use with #10790 Mini Maxx® WideMaxx® suspension kit)
10789X	Driveshafts, steel constant-velocity (assembled), front or rear (4)/ drive cups (4)/ screw pins (4) (for use with #10790 Mini Maxx® WideMaxx® suspension kit)
8347	Nuts, 4mm flanged nylon locking, serrated (black) (10)
10788	Stub axle assembly, outer, extreme heavy duty (1) (left or right, front or rear) (assembled with internal-splined half shaft) (for use with #10790 Mini Maxx® WideMaxx® suspension kit)
2754	Stub axle pins (4)
9054X	Stub axle, front, steel-splined constant velocity (1)
3654	Wheel hubs, hex (front) (tall offset) (2)/ axle pins (2.5x10mm) (2)

Front Suspension & Steering

10733-BLUE	Caster blocks (c-hubs), 6061-T6 aluminum (blue-anodized) (left & right)
10733-GRAY	Caster blocks (c-hubs), 6061-T6 aluminum (dark titanium-anodized) (left & right)
10733-GRN	Caster blocks (c-hubs), 6061-T6 aluminum (green-anodized) (left & right)
10733-ORNG	Caster blocks (c-hubs), 6061-T6 aluminum (orange-anodized) (left & right)
10733-RED	Caster blocks (c-hubs), 6061-T6 aluminum (red-anodized) (left & right)
10732-BLK	Caster blocks (c-hubs), left & right (black)
10732-BLUE	Caster blocks (c-hubs), left & right (blue)
10732-GRAY	Caster blocks (c-hubs), left & right (gray)
10732-GRN	Caster blocks (c-hubs), left & right (green)
10732-ORNG	Caster blocks (c-hubs), left & right (orange)
10732-RED	Caster blocks (c-hubs), left & right (red)
10787	Differential output yoke assembly, extreme heavy duty (1) (left or right, front or rear) (assembled with external-splined half shaft)/ screw pin (1) (for use with #10790 Mini Maxx® WideMaxx® suspension kit)
10747X	Drive cup, steel (1)/ screw pin (1)
10789	Driveshaft assembly (left or right, front or rear) (1) (fully assembled, ready to install)/ screw pin (1) (for use with #10790 Mini Maxx® WideMaxx® suspension kit)
10786X	Driveshaft, steel constant-velocity (shaft only, 63.5mm) (1) (for use with #10790 Mini Maxx® WideMaxx® suspension kit)
10789X	Driveshafts, steel constant-velocity (assembled), front or rear (4)/ drive cups (4)/ screw pins (4) (for use with #10790 Mini Maxx® WideMaxx® suspension kit)

Page 2 Mini XRT®: TQi™ Traxxas Link™ Enabled 2.4GHz Radio & TSM® (Model 108076-1) Parts List

10746	Shock tower, front
10743	Steering bellcranks (2)/ draglink (1)/ steering link (1)
10743-BLUE	Steering bellcranks, draglink (blue-anodized 6061-T6 aluminum)/ 3x13mm SS (with threadlock) (2)/ 3x12mm BCS (with threadlock) (2)/ 3x15mm BCS (with threadlock) (1)/ 5x8x2.5mm ball bearings (2)/ 5x10x4mm ball bearings (2)
10743-GRAY	Steering bellcranks, draglink (dark titanium-anodized 6061-T6 aluminum)/ 3x13mm SS (with threadlock) (2)/ 3x12mm BCS (with threadlock) (2)/ 3x15mm BCS (with threadlock) (1)/ 5x8x2.5mm ball bearings (2)/ 5x10x4mm ball bearings (2)
10743-GRN	Steering bellcranks, draglink (green-anodized 6061-T6 aluminum)/ 3x13mm SS (with threadlock) (2)/ 3x12mm BCS (with threadlock) (2)/ 3x15mm BCS (with threadlock) (1)/ 5x8x2.5mm ball bearings (2)/ 5x10x4mm ball bearings (2)
10743-ORNG	Steering bellcranks, draglink (orange-anodized 6061-T6 aluminum)/ 3x13mm SS (with threadlock) (2)/ 3x12mm BCS (with threadlock) (2)/ 3x15mm BCS (with threadlock) (1)/ 5x8x2.5mm ball bearings (2)/ 5x10x4mm ball bearings (2)
10743-RED	Steering bellcranks, draglink (red-anodized 6061-T6 aluminum)/ 3x13mm SS (with threadlock) (2)/ 3x12mm BCS (with threadlock) (2)/ 3x15mm BCS (with threadlock) (1)/ 5x8x2.5mm ball bearings (2)/ 5x10x4mm ball bearings (2)
10734-BLUE	Steering blocks, 6061-T6 aluminum (blue-anodized) (left & right)/ 3x12mm SS (with threadlock) (4)/ 3x15mm BCS (with threadlock) (2)
10734-GRAY	Steering blocks, 6061-T6 aluminum (dark titanium-anodized) (left & right)/ 3x12mm SS (with threadlock) (4)/ 3x15mm BCS (with threadlock) (2)
10734-GRN	Steering blocks, 6061-T6 aluminum (green-anodized) (left & right)/ 3x12mm SS (with threadlock) (4)/ 3x15mm BCS (with threadlock) (2)
10734-ORNG	Steering blocks, 6061-T6 aluminum (orange-anodized) (left & right)/ 3x12mm SS (with threadlock) (4)/ 3x15mm BCS (with threadlock) (2)
10734-RED	Steering blocks, 6061-T6 aluminum (red-anodized) (left & right)/ 3x12mm SS (with threadlock) (4)/ 3x15mm BCS (with threadlock) (2)
10736-BLK	Steering blocks, left & right (black)
10736-BLUE	Steering blocks, left & right (blue)
10736-GRAY	Steering blocks, left & right (gray)
10736-GRN	Steering blocks, left & right (green)
10736-ORNG	Steering blocks, left & right (orange)
10736-RED	Steering blocks, left & right (red)
10788	Stub axle assembly, outer, extreme heavy duty (1) (left or right, front or rear) (assembled with internal-splined half shaft) (for use with #10790 Mini Maxx® WideMaxx® suspension kit)
10725-BLUE	Suspension arms, front (upper left (1)/ upper right (1)/ lower left (1)/ lower right (1)) (blue) (for use with #10790 Mini Maxx® WideMaxx® suspension kit)
10725-BLK	Suspension arms, front (upper left (1)/ upper right (1)/ lower left (1)/ lower right (1)) (for use with #10790 Mini Maxx® WideMaxx® suspension kit)
10725-GRN	Suspension arms, front (upper left (1)/ upper right (1)/ lower left (1)/ lower right (1)) (green) (for use with #10790 Mini Maxx® WideMaxx® suspension kit)
10725-ORNG	Suspension arms, front (upper left (1)/ upper right (1)/ lower left (1)/ lower right (1)) (orange) (for use with #10790 Mini Maxx® WideMaxx® suspension kit)
10725-RED	Suspension arms, front (upper left (1)/ upper right (1)/ lower left (1)/ lower right (1)) (red) (for use with #10790 Mini Maxx® WideMaxx® suspension kit)
10741X	Suspension pins, inner, upper (hardened steel), 3x45mm (4)
10740X	Suspension pins, outer (hardened steel), 3x34mm (4), 3x37mm (4)
10740	Suspension screw pin set, front or rear, 3x40mm (6), 3x32mm (4), 3x28mm (4), 3x46mm (2)

Hardware

10792	Hardware kit, Mini Maxx® (contains all hardware used on Mini Maxx®)
3229	Screws, 2.5x10mm cap-head machine (hex drive) (6)
3965	Screws, 2.5x8mm cap-head machine (6)
2577	Screws, 3x10mm button-head machine (hex drive) (6)
2551	Screws, 3x10mm countersunk machine (6) (hex drive)
2578	Screws, 3x12mm button-head machine (hex drive) (6)
2593	Screws, 3x14mm button-head machine (hex drive) (6)
2579	Screws, 3x15mm button-head machine (hex drive) (6)
2580	Screws, 3x20mm button-head machine (hex drive) (6)
2554	Screws, 3x6mm caphead machine (hex drive) (6)
3932	Screws, 3x6mm flat-head machine (hex drive) (6)
2576	Screws, 3x8mm button-head machine (hex drive) (6)
2550	Screws, 3x8mm countersunk machine (6) (hex drive)
3642X	Shoulder screws, Ultra Shocks (3x12 hex drive) (6)
10741X	Suspension pins, inner, upper (hardened steel), 3x45mm (4)

10740X	Suspension pins, outer (hardened steel), 3x34mm (4), 3x37mm (4)
10740	Suspension screw pin set, front or rear, 3x40mm (6), 3x32mm (4), 3x28mm (4), 3x46mm (2)

LED Lights

6588X	Accessory power supply (regulated, 3V, 3 amp)/ power tap connector (with cable)/ 3x10 BCS (2)/ 2.6x8 BCS (2)
10783	Bumper, front (with LED lights) (replacement for #10749 front bumper) (requires #6588X power supply or #10785 LED light kit)
10785	LED light kit, Mini XRT®, complete (includes front bumper with LED lights, roof skid plate with LED lights, 3-volt accessory power supply, and power tap connector (with cable) (fits #10712 body)
10799-BLUE	LED light set, blue, complete (underbody) (fits Mini Maxx®) (requires #6588X power supply or #10795 LED light kit)
10799-GRN	LED light set, green, complete (underbody) (fits Mini Maxx®) (requires #6588X power supply or #10795 LED light kit)
10799-RED	LED light set, red, complete (underbody) (fits Mini Maxx®) (requires #6588X power supply or #10795 LED light kit)
10799-WHT	LED light set, white, complete (underbody) (fits Mini Maxx®) (requires #6588X power supply or #10795 LED light kit)
10784	Skid plate, roof (body) (with LED lights) (fits #10712 body) (requires #6588X power supply or #10785 LED light kit)

Motors & Electronics

6588X	Accessory power supply (regulated, 3V, 3 amp)/ power tap connector (with cable)/ 3x10 BCS (2)/ 2.6x8 BCS (2)
3456	Cooling fan kit (with shroud) (fits #3351R and #3461 motors) (requires #3458 heat sink to mount)
3340	Cooling fan, electronic speed control, Velineon® VXL-3s, VXL-4s or BL-2s™
10777X	Covers, gear (1)/ receiver (1)/ center driveshaft (1)
2072X	Gear set, metal (for 2070, 2075 servos)
2252	Gear set, metal (for 2250, 2255 servos)
2272	Gear set, metal (for 2270 waterproof servo)
2287	Gear set, metal (for 2280 servo)
2072R	Gear set, metal, high-speed (for 2070, 2075 servos)
3458	Heat sink (fits #3351R and #3461 motors)
3354R	Motor cover, endbell (Velineon® 3500)
3351R	Motor, Velineon® 3500, brushless (assembled with 12-gauge wire and gold-plated bullet connectors)
2254	Servo case, aluminum (middle) (blue-anodized) (for 2250 servo)
2253	Servo case, aluminum (middle) (red-anodized) (for 2255 servo)
2251	Servo case, plastic (top, middle, bottom)/ gaskets/ hardware (for 2250, 2255 servos)
2271	Servo case/ gaskets (for 2270 waterproof servo)
2074	Servo case/gaskets (for 2056 and 2075 waterproof servos)
2075R	Servo, digital high-speed, metal gear (ball bearing), waterproof
2250	Servo, digital high-torque 330 coreless, metal gear (ball bearing), waterproof
2255	Servo, digital high-torque 400 brushless, metal gear (ball bearing), waterproof
2280	Servo, digital high-torque 600 brushless, metal gear (ball bearing), waterproof
2270	Servo, digital high-torque, metal gear (ball bearing), waterproof
2075X	Servo, digital high-torque, metal gear (ball bearing), waterproof
3350R	Velineon® VXL-3s Brushless Power System, waterproof (includes VXL-3s waterproof ESC, Velineon® 3500 motor, and speed control mounting plate (part #3725))
3355R	VXL-3s Waterproof Electronic Speed Control (brushless) (fwd/rev/brake)

Radio System, Batteries & Chargers

2824X	2300mAh 11.1V 3-Cell 25C LiPo Battery
2825X	3500mAh 7.4V 2-Cell 25C LiPo Battery
2938X	Adapter, Traxxas® iD® LiPo battery (adapts Traxxas® iD® batteries to separate balance ports)
2943	Battery charge indicators, green (4), grey (4), blue (4)
2914	Battery, Power Cell AA Alkaline (4)
2972	Charger, EZ-Peak Dual, 100W, NiMH/LiPo with iD Auto Battery Identification
2973	Charger, EZ-Peak Live Dual, 200W, NiMH/LiPo with iD Auto Battery Identification
2970	Charger, EZ-Peak Plus, 4 amp, NiMH/LiPo with iD Auto Battery Identification
2981	Charger, EZ-Peak® Plus 4s, 8 amp, NiMH/LiPo with iD® Auto Battery Identification
2985	Charger, EZ-Peak®, USB-C, 40W, NiMH/LiPo with iD® Auto Battery Identification
2920	Charger, USB-C, 2s LiPo (with iD®)
6512	Cover plate, Traxxas® Link Bluetooth® module
2072X	Gear set, metal (for 2070, 2075 servos)
2252	Gear set, metal (for 2250, 2255 servos)

Page 3 Mini XRT®: TQi™ Traxxas Link™ Enabled 2.4GHz Radio & TSM® (Model 108076-1) Parts List

2272	Gear set, metal (for 2270 waterproof servo)
2287	Gear set, metal (for 2280 servo)
2968X	LiPo cell voltage checker/balancer (includes #2938X adapter for Traxxas® iD® batteries)
2968	LiPo cell voltage checker/balancer (requires #2938X adapter for Traxxas® iD® batteries)
2912	Power adapter, AC, USB-C (45W) (110 volt, North America only)
2916	Power cable, USB-C, 100W (high output), 5 ft. (1.5m)
6533	Receiver, micro, TQi 2.4GHz with telemetry & TSM® (5-channel)
2254	Servo case, aluminum (middle) (blue-anodized) (for 2250 servo)
2253	Servo case, aluminum (middle) (red-anodized) (for 2255 servo)
2251	Servo case, plastic (top, middle, bottom)/ gaskets/ hardware (for 2250, 2255 servos)
2271	Servo case/ gaskets (for 2270 waterproof servo)
2074	Servo case/gaskets (for 2056 and 2075 waterproof servos)
2280	Servo, digital high-torque 600 brushless, metal gear (ball bearing), waterproof
2075X	Servo, digital high-torque, metal gear (ball bearing), waterproof
6509R	TQi 2.4 GHz High Output radio system, 2-channel, Traxxas® Link enabled, TSM® (2-ch transmitter, 5-ch micro receiver)
6507R	TQi 2.4 GHz High Output radio system, 4-channel with Traxxas® Link Bluetooth® module, TSM® (4-ch transmitter, 5-ch micro receiver)
6528	Transmitter, TQi Traxxas® Link enabled, 2.4GHz high output, 2-channel (transmitter only)
6529X	Transmitter, TQi Traxxas® Link enabled, 2.4GHz high output, 3-channel (transmitter only)
6530	Transmitter, TQi Traxxas® Link enabled, 2.4GHz high output, 4-channel (transmitter only)

Ready-To-Race Model

108076-1	Mini XRT® VXL: 4WD Brushless Electric Monster Truck with TQi™ Traxxas Link™ Enabled 2.4GHz Radio System & Traxxas Stability Management (TSM)®
----------	---

Rear Suspension

10752-BLK	Carriers, stub axle (black) (rear) (left & right)
10752-BLUE	Carriers, stub axle (blue) (rear) (left & right)
10752-GRAY	Carriers, stub axle (gray) (rear) (left & right)
10752-GRN	Carriers, stub axle (green) (rear) (left & right)
10752-ORNG	Carriers, stub axle (orange) (rear) (left & right)
10752-RED	Carriers, stub axle (red) (rear) (left & right)
10751-BLUE	Carriers, stub axle, 6061-T6 aluminum (blue-anodized) (left & right)
10751-GRAY	Carriers, stub axle, 6061-T6 aluminum (dark titanium-anodized) (left & right)
10751-GRN	Carriers, stub axle, 6061-T6 aluminum (green-anodized) (left & right)
10751-ORNG	Carriers, stub axle, 6061-T6 aluminum (orange-anodized) (left & right)
10751-RED	Carriers, stub axle, 6061-T6 aluminum (red-anodized) (left & right)
10787	Differential output yoke assembly, extreme heavy duty (1) (left or right, front or rear) (assembled with external-splined half shaft)/ screw pin (1) (for use with #10790 Mini Maxx® WideMaxx® suspension kit)
10747X	Drive cup, steel (1)/ screw pin (1)
10789	Driveshaft assembly (left or right, front or rear) (1) (fully assembled, ready to install)/ screw pin (1) (for use with #10790 Mini Maxx® WideMaxx® suspension kit)
10786X	Driveshaft, steel constant-velocity (shaft only, 63.5mm) (1) (for use with #10790 Mini Maxx® WideMaxx® suspension kit)
10789X	Driveshafts, steel constant-velocity (assembled), front or rear (4)/ drive cups (4)/ screw pins (4) (for use with #10790 Mini Maxx® WideMaxx® suspension kit)
10744	Shock tower, rear
10788	Stub axle assembly, outer, extreme heavy duty (1) (left or right, front or rear) (assembled with internal-splined half shaft) (for use with #10790 Mini Maxx® WideMaxx® suspension kit)
10727-BLUE	Suspension arms, rear (upper left (1)/ upper right (1)/ lower left (1)/ lower right (1)) (blue) (for use with #10790 Mini Maxx® WideMaxx® suspension kit)
10727-BLK	Suspension arms, rear (upper left (1)/ upper right (1)/ lower left (1)/ lower right (1)) (for use with #10790 Mini Maxx® WideMaxx® suspension kit)
10727-GRN	Suspension arms, rear (upper left (1)/ upper right (1)/ lower left (1)/ lower right (1)) (green) (for use with #10790 Mini Maxx® WideMaxx® suspension kit)
10727-ORNG	Suspension arms, rear (upper left (1)/ upper right (1)/ lower left (1)/ lower right (1)) (orange) (for use with #10790 Mini Maxx® WideMaxx® suspension kit)
10727-RED	Suspension arms, rear (upper left (1)/ upper right (1)/ lower left (1)/ lower right (1)) (red) (for use with #10790 Mini Maxx® WideMaxx® suspension kit)

10741X	Suspension pins, inner, upper (hardened steel), 3x45mm (4)
10740X	Suspension pins, outer (hardened steel), 3x34mm (4), 3x37mm (4)
10740	Suspension screw pin set, front or rear, 3x40mm (6), 3x32mm (4), 3x28mm (4), 3x46mm (2)

Shock Oil

5031	Oil, shock (20 wt, 200 cSt, 60cc) (silicone)
5032	Oil, shock (30 wt, 350 cSt, 60cc) (silicone)
5033	Oil, shock (40 wt, 500 cSt, 60cc) (silicone)
5034	Oil, shock (50 wt, 600 cSt, 60cc) (silicone)
5035	Oil, shock (60 wt, 700 cSt, 60cc) (silicone)
5036	Oil, shock (70 wt, 900 cSt, 60cc) (silicone)
5037	Oil, shock (80 wt, 1,000 cSt, 60cc) (silicone)
5029	Shock oil bottle (60cc) (for mixing shock oil)
5038X	Shock oil set (includes 20 wt, 30 wt, 40 wt, 50 wt, 60 wt, 70 wt, & 80 wt premium shock oils with spinning carousel rack)
5038	Spinning carousel rack

Shocks (GTR Shocks)

7466X	Body, GTR long (hard-anodized, PTFE-coated aluminum) (1)
7466-PINK	Body, GTR long (pink-anodized, PTFE-coated aluminum) (1)
7466	Body, GTR long shock, aluminum (blue-anodized) (PTFE-coated bodies) (1)
7466G	Body, GTR long shock, aluminum (green-anodized) (PTFE-coated bodies) (1)
7466A	Body, GTR long shock, aluminum (orange-anodized) (PTFE-coated bodies) (1)
7466R	Body, GTR long shock, aluminum (red-anodized) (PTFE-coated bodies) (1)
7468X	Caps & spring retainers, GTR shock (upper cap (2)/ hollow balls (4)/ bottom cap (2)/ upper retainer (2)/ lower retainer (2))
8455	Rebuild kit, GTR shocks (x-rings, bladders, pistons, piston nuts, shock rod ends) (renews 2 shocks)
7464T	Shaft, GTR long, TiN-coated (2)
8456	Shock caps, aluminum (black-anodized), Fox® shocks (4)
8457	Shock caps, aluminum (blue-anodized), King® shocks (4)
10765-BLUE	Shocks, GTR long, blue-anodized, PTFE-coated bodies with TiN shafts (assembled with springs) (4)
10765-GRN	Shocks, GTR long, green-anodized, PTFE-coated bodies with TiN shafts (assembled with springs) (4)
10765-ORNG	Shocks, GTR long, orange-anodized, PTFE-coated bodies with TiN shafts (assembled with springs) (4)
10765-RED	Shocks, GTR long, red-anodized, PTFE-coated bodies with TiN shafts (assembled with springs) (4)
8459	Spring retainers, lower (captured) (4)/ 2.5x10 CS (4)
5427	Spring, shock (GTR) (front 0.7 yellow) (1 pair)
5428	Spring, shock (GTR) (front) (0.9 rate orange) (1 pair)
5429	Spring, shock (GTR) (rear) (1.0 rate tan) (1 pair)
5430	Spring, shock (GTR) (std. front) (1.1 rate green) (1 pair)

Shocks (Ultra Shocks)

3765A	Body, Ultra Shock (long) (grey) (2)
1942	Rod ends (16 long & 4 short)/ hollow ball connectors (18)/ ball screws (2)
2742X	Rod ends, short (6)/ hollow balls (6)
3767	Shock caps (2)/ shock bottoms (2)
8361	Shock caps (black) (4) (assembled with hollow balls)
2362	Shock rebuild kit (for 2 shocks)
1664T	Shock shafts, hardened steel, titanium nitride coated (long) (2)
1664	Shock shafts, steel, chrome finish (long) (2)
1765	Silicone diaphragms (4)
3769	Spring pre-load spacers: 1mm (4)/ 2mm (2)/ 4mm (2)/ 8mm (2)
3768	Spring retainers, upper & lower (2)/ piston head set (2-hole (2)/ 3-hole (2))
2458P	Springs (front) (pink) (2)
2458A	Springs (front) (white) (2)
3757T	Springs, blue (rear) (2)
2458	Springs, front (black) (2)
5857P	Springs, front (pink) (progressive rate) (2)
5857	Springs, front (white) (progressive rate) (2)
3757A	Springs, green (rear) (2)
3757P	Springs, pink (rear) (2)
3757	Springs, rear (black) (2)
5858P	Springs, rear (pink) (progressive rate) (2)
5858	Springs, rear (white) (progressive rate) (2)
4957	Springs, red (for Ultra Shocks only) (2.5 rate) (f/r) (2)
10763	Springs, shock (0.8 rate) (natural finish) (2)
3757X	Springs, white (rear) (2)
3760	Ultra Shocks (black) (long) (complete w/ spring pre-load spacers & springs) (front) (2)
3760A	Ultra Shocks (gray) (long) (complete w/ spring pre-load spacers & springs) (2)

Page 4 Mini XRT®: TQi™ Traxxas Link™ Enabled 2.4GHz Radio & TSM® (Model 108076-1) Parts List

3760-GRAY Ultra Shocks (gray) (long) (complete w/ spring pre-load spacers & springs) (4) 3425

Spur Gears & Pinion Gears

3945X	Gear, 15-T pinion (32-p), heavy duty (machined, hardened steel) (fits 3mm shaft)/ set screw	3426
3946X	Gear, 16-T pinion (32-p), heavy duty (machined, hardened steel) (fits 3mm shaft)/ set screw	3432
3947X	Gear, 17-T pinion (32-p), heavy duty (machined, hardened steel) (fits 3mm shaft)/ set screw	3431
3948X	Gear, 18-T pinion (32-p), heavy duty (machined, hardened steel) (fits 3mm shaft)/ set screw	8712
3949X	Gear, 19-T pinion (32-p), heavy duty (machined, hardened steel) (fits 3mm shaft)/ set screw	8720
3950X	Gear, 20-T pinion (32-p), heavy duty (machined, hardened steel) (fits 3mm shaft)/ set screw	8721
3951X	Gear, 21-T pinion (32-p), heavy duty (machined, hardened steel) (fits 3mm shaft)/ set screw	8722
3952X	Gear, 22-T pinion (32-p), heavy duty (machined, hardened steel) (fits 3mm shaft)/ set screw	8710
10840	Gear, 23-T pinion (32-p) (fits 3mm shaft)/ set screw	
10841	Gear, 24-T pinion (32-p) (fits 3mm shaft)/ set screw	
10842	Gear, 25-T pinion (32-p) (fits 3mm shaft)/ set screw	
10761	Spur gear, 47-tooth (0.8 metric pitch, compatible with 32-pitch) (for center differential)	
10761X	Spur gear, steel, 47-tooth (0.8 metric pitch, compatible with 32-pitch) (for center differential)	8711

Steering Components

10745	Servo saver/ servo saver spring/ servo horn, steering	8715
8344X	Servo saver/ servo saver spring/ servo saver horn, steering	8715X
10743	Steering bellcranks (2)/ draglink (1)/ steering link (1)	
10743-BLUE	Steering bellcranks, draglink (blue-anodized 6061-T6 aluminum)/ 3x13mm SS (with threadlock) (2)/ 3x12mm BCS (with threadlock) (2)/ 3x15mm BCS (with threadlock) (1)/ 5x8x2.5mm ball bearings (2)/ 5x10x4mm ball bearings (2)	8714
10743-GRAY	Steering bellcranks, draglink (dark titanium-anodized 6061-T6 aluminum)/ 3x13mm SS (with threadlock) (2)/ 3x12mm BCS (with threadlock) (2)/ 3x15mm BCS (with threadlock) (1)/ 5x8x2.5mm ball bearings (2)/ 5x10x4mm ball bearings (2)	2748R
10743-GRN	Steering bellcranks, draglink (green-anodized 6061-T6 aluminum)/ 3x13mm SS (with threadlock) (2)/ 3x12mm BCS (with threadlock) (2)/ 3x15mm BCS (with threadlock) (1)/ 5x8x2.5mm ball bearings (2)/ 5x10x4mm ball bearings (2)	3415
10743-ORNG	Steering bellcranks, draglink (orange-anodized 6061-T6 aluminum)/ 3x13mm SS (with threadlock) (2)/ 3x12mm BCS (with threadlock) (2)/ 3x15mm BCS (with threadlock) (1)/ 5x8x2.5mm ball bearings (2)/ 5x10x4mm ball bearings (2)	
10743-RED	Steering bellcranks, draglink (red-anodized 6061-T6 aluminum)/ 3x13mm SS (with threadlock) (2)/ 3x12mm BCS (with threadlock) (2)/ 3x15mm BCS (with threadlock) (1)/ 5x8x2.5mm ball bearings (2)/ 5x10x4mm ball bearings (2)	

Suspension Linkage

10741X	Suspension pins, inner, upper (hardened steel), 3x45mm (4)	
10740X	Suspension pins, outer (hardened steel), 3x34mm (4), 3x37mm (4)	
10740	Suspension screw pin set, front or rear, 3x40mm (6), 3x32mm (4), 3x28mm (4), 3x46mm (2)	
10791	Toe links, front (molded composite) (2)/ hollow balls (4) (71mm center to center) (for use with #10790 Mini Maxx® WideMaxx® suspension kit)	

Team Traxxas Items

9916	Backpack, RC car carrier, 12" x 12" x 24" (fits TRX-4 & similar)	
2514	Decal sheet, racing sponsors	
9917	Duffel bag, medium, 30" x 12" x 12" (fits 1/10 Slash®, TRX-4®, & similar)	
9950	Official Team Traxxas® racing decal set(flag logo/ 6-color)	
9909	Traxxas® racing banner, red & black (3x7 feet)	

Tires & Wheels

10772-GRAY	Tires & wheels, assembled (charcoal gray wheels, dual profile (2.1" outer, 2.6" inner), Gravix® tires, foam inserts) (front) (left & right)	
10775-GRAY	Tires & wheels, assembled (charcoal gray wheels, dual profile (2.1" outer, 2.6" inner), Gravix® tires, foam inserts) (rear) (left & right)	
10774-GRAY	Tires & wheels, assembled (charcoal gray wheels, dual profile (2.1" outer, 2.6" inner), Response Pro tires, foam inserts) (2)	
10773-WHT	Tires & wheels, assembled (white wheels, dual profile (2.1" outer, 2.6" inner), Response Pro tires, foam inserts) (2)	

Traxxas Tools

3433X	Body reamer (aluminum handle)	
3433	Body reamer (plastic handle)	
3436	Cap, body reamer	

Rubber pit mat, 16x24x0.28	
Rubber pit mat, 36x20	
Scissors, curved tip	
Scissors, straight tip	
Speed Bit Essentials Set, hex and nut driver, 7-piece, includes premium handle (medium), travel pouch, hex drivers (straight: 1.5mm, 2.0mm, 2.5mm) and nut drivers (5.0mm, 5.5mm, 7.0mm, and 8.0mm), 1/4" drive	
Speed bit handle, large (overmolded)	
Speed bit handle, medium (one piece)	
Speed bit handle, premium (rubber overmold)	
Speed Bit Master Set, hex and nut driver, 13-piece, includes premium handle (medium), travel pouch, hex drivers (straight: 1.5mm, 2.0mm, 2.5mm, 3.0mm), (ball-end: 2.0mm, 2.5mm, 3.0mm), and nut drivers (4.0mm, 4.5mm, 5.0mm, 5.5mm, 7.0mm, 8.0mm), 1/4" drive	
Speed Bit Master Set, hex driver, 7-piece straight and ball end, includes premium handle (medium), travel pouch, hex drivers (straight: 1.5mm, 2.0mm, 2.5mm, 3.0mm) (ball end: 2.0mm, 2.5mm, 3.0mm), 1/4" drive	
Speed Bit Master Set, nut driver, 6-piece, includes premium handle (medium), travel pouch, and nut drivers (4.0mm, 4.5mm, 5.0mm, 5.5mm, 7.0mm, 8.0mm), 1/4" drive	
Speed Bit Set, hex driver, 2-piece ball-end (2.0mm, 2.5mm), 1/4" drive	
Speed Bit Set, hex driver, 3-piece ball-end (2.0mm, 2.5mm, 3.0mm) 1/4" drive	
Speed Bit Set, hex driver, 3-piece straight (1.5mm, 2.0mm, 2.5mm), 1/4" drive	
Speed Bit Set, hex driver, 4-piece straight (1.5mm, 2.0mm, 2.5mm, 3.0mm), 1/4" drive	
Speed Bit Set, screwdriver, 3-piece straight (3mm slotted, #1 Phillips, and #2 Phillips bits), 1/4" drive	
Tool set (includes 1.5mm hex wrench / 2.0mm hex wrench / 2.5mm hex wrench/ 4-way wrench/ 8mm & 4mm wrench/ U-joint wrench)	
Tool set with pouch (includes 1.5mm, 2.0mm, 2.5mm, 3.0mm, 3.5mm, 4mm drivers/4mm. 5mm, 5.5mm, 7mm, and 8mm nut drivers/ 2mm, 3mm, and 4mm slotted screwdrivers/ #00 Phillips, #0 Phillips, and #1 Phillips screwdrivers/ 4mm and 8mm wrenches/ driver handle)	

If you have questions or need technical assistance, call Traxxas at:

1-888-TRAXXAS

(1-888-872-9927) (U.S. residents only)

For orders, calls outside the U.S., and other information, call 972-549-3000, or fax to 972-549-3011 e-mail Traxxas at support@Traxxas.com

TRAXXAS.COM